

## Entone 500

## TV Set-Top Box Set Up Guide



## Setting up your TV Service

Follow these steps if your TV is **NEAR** your modem.  
If your TV is not near your modem, follow steps on reverse side of this guide.

### Before you begin:

#### > Review the contents of your install kit:

- Set-Top Box and power cord
- HDMI cable
- Remote control and 2 batteries
- 2 ethernet cables
- 2 Power Line Connectors

#### > Read through instructions

- Select the best set up option based on location of your TV and modem.
- Ensure you follow the steps in order shown.
- Locate the necessary outlets in your home.

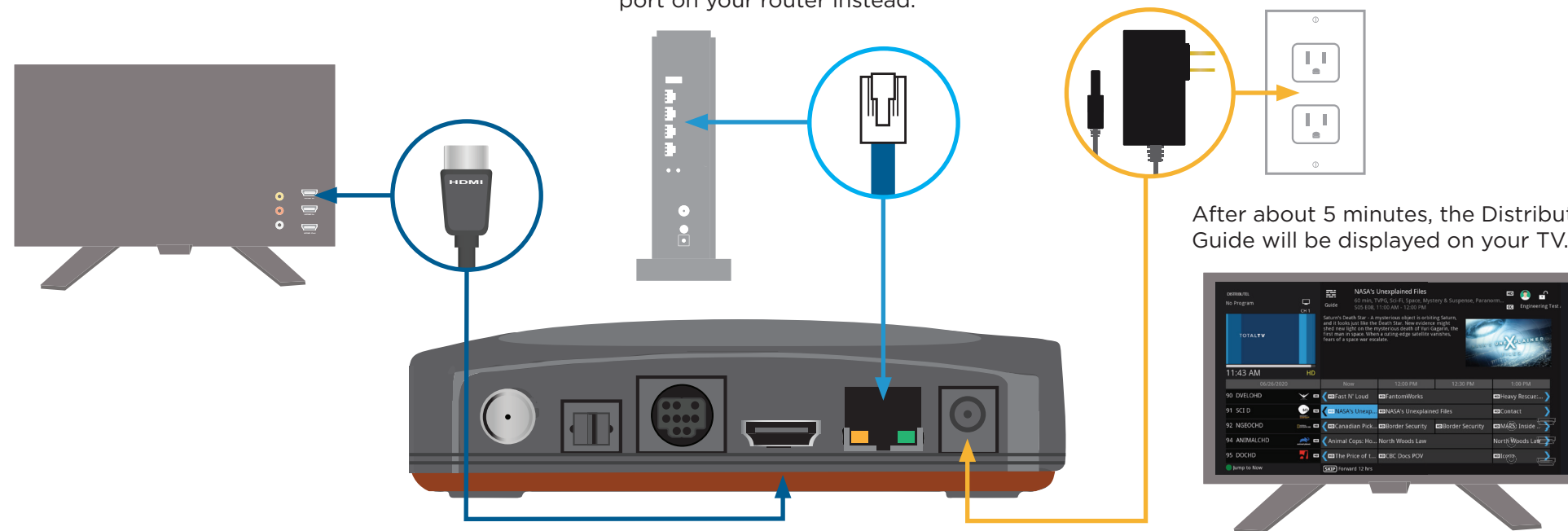
#### > Additional Resources

You can find additional self-help resources at [distributel.ca/support](http://distributel.ca/support).

**1** Place your Set-Top Box near your TV. Connect the HDMI cable to your Set-Top Box, then connect to an HDMI port on your TV. (Note name of port you use.)

**2** Connect an ethernet cable to the LAN port on your Set-Top Box, then connect the other end to a LAN port on your internet modem.  
If you use a router, connect it to a LAN port on your router instead.

**3** Attach the power cord to the Set-Top Box and connect to a nearby electrical outlet. Select 'INPUT' or 'SOURCE' on your TV and ensure it matches the port selected in Step 1.



**After following these three easy steps, you can now press 'menu' on the remote and begin enjoying your TV service.**

For tips on how to use the included PVR, remote control, electronic program guide, setting up parental controls and other helpful info, check out the Support page of our website at [distributel.ca](http://distributel.ca).



For information on our products and services,  
visit **distributel.ca**

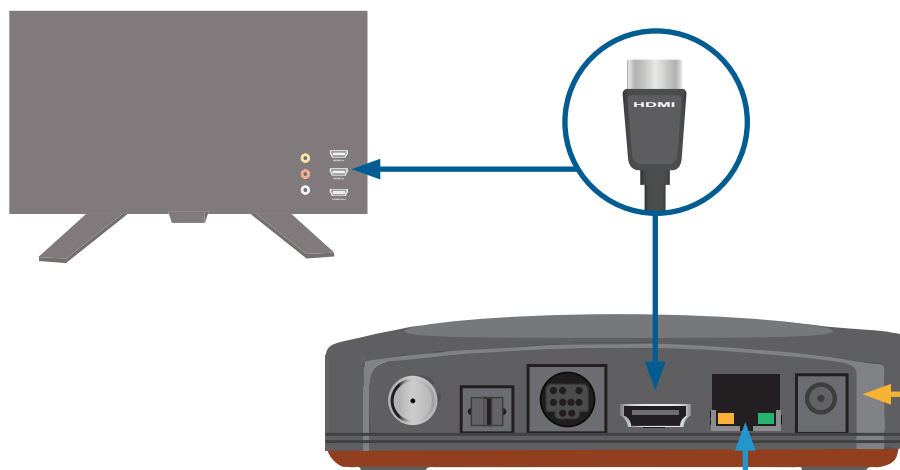
Contact our Customer Support team at **1-877-810-2877**

TV service provided by TOTALTV.

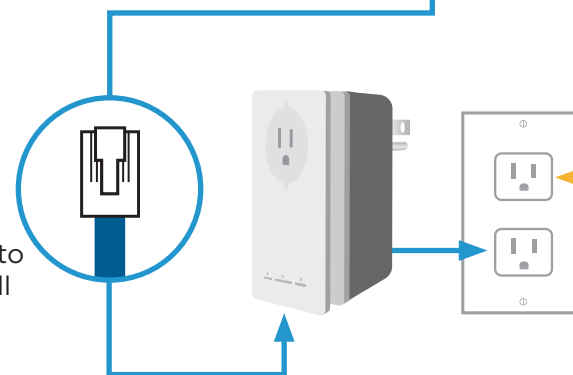
## Setting up your TV Service

Follow these steps if your TV is **NOT NEAR** your modem.

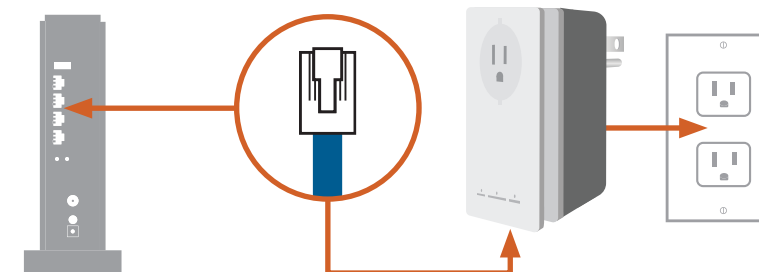
- 1 Place your Set-Top Box near your TV. Connect the HDMI cable to your Set-Top Box, then connect to an HDMI port on your TV. (Note name of port you use.)



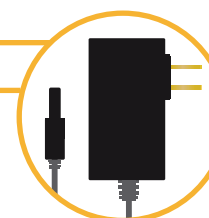
- 2 Attach one ethernet cable to your Set-Top Box and then to the bottom of a Power Line Connector. Plug the Connector into a nearby electrical wall outlet.



- 3 Attach second ethernet cable to a LAN port on your modem or router, and then to the second Power Line Connector. Connect the Power Line Connector to a nearby electrical wall outlet.



- 4 Attach the power cord to the Set-Top Box and connect to a nearby electrical outlet. Select 'INPUT' or 'SOURCE' on your TV and ensure it matches the port selected in Step 1. After about 5 minutes, the Distributel Guide will be displayed on your TV.



**After following these four easy steps, you can now press 'menu' on the remote and begin enjoying your TV service.**

For tips on how to use the included PVR, remote control, electronic program guide, setting up parental controls and other helpful info, check out the Support page of our website at [distributel.ca](http://distributel.ca).