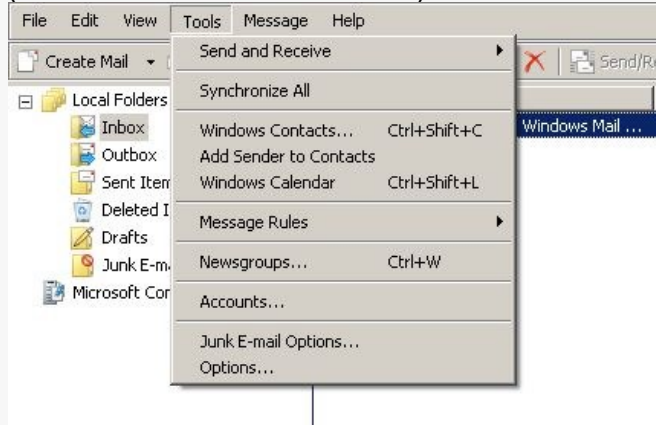


Configuring an IMAP email account on Windows Mail

You will find within the following pages all the information and instructions necessary for configuring your new IMAP email account in Windows Mail. Although some screens may differ depending on the version of Windows Mail you are using, the steps to follow and the required data to provide will remain the same.

Click on the **Tools** drop-down menu at the top of the screen, and then choose **Accounts**.

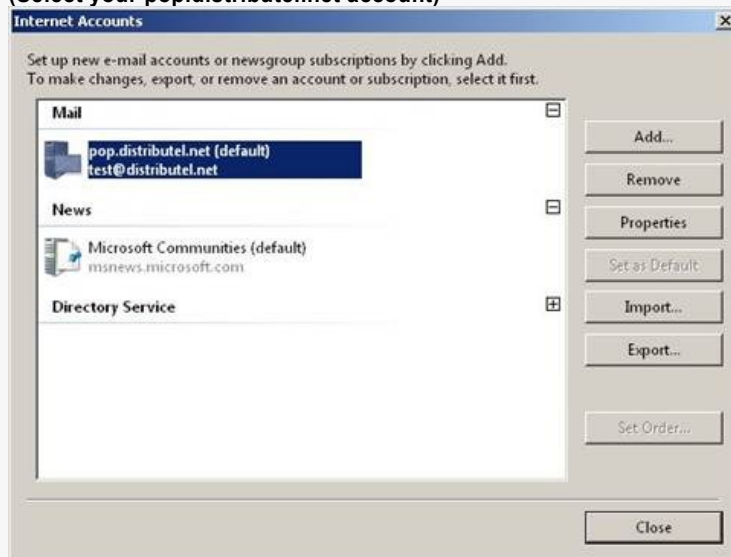
(Click on Tools then select Accounts...)



In the Internet Accounts window, if you had a Distributel POP email account (pop.distributel.net) **Remove** it, then click on the **Add** button, and choose **Mail**.

If you **did not** have a Distributel POP email account simply click on the **Add** button and choose **Mail**. (Select your pop.distributel.net account)

(Select your pop.distributel.net account)



(Confirm the deletion by pressing OK)



(Click on Add...)

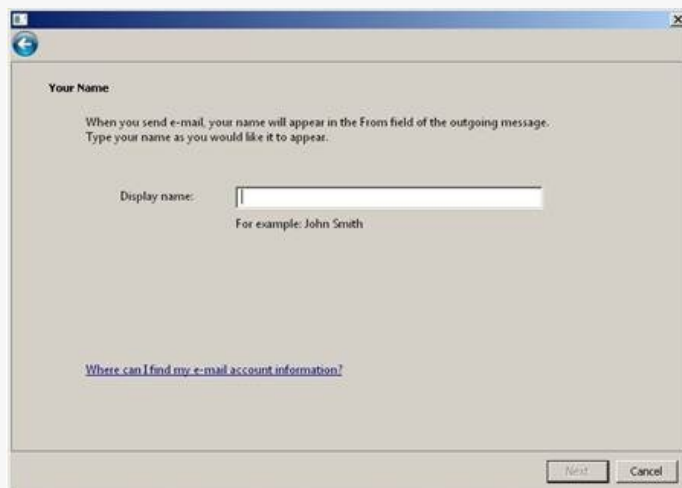


(Choose E-mail Account and press Next)



Once you have reached the email Configuration Wizard you will now have to provide the **adequate information in all of the required fields** in order for your new IMAP email account to work properly. We recommend you double-check in order to **avoid any errors or typos for they may render your email account unusable**.

Display Name: this is the name that will be displayed on your correspondent's screen upon reception of your email. You can choose any display name you wish even if **Your Name** is usually recommended.



E-mail Address : this is the email that we provided you and should resemble **EmailUsername@distributed.net**



E-mail address:

For example: someone@microsoft.com

[Where can I find my e-mail account information?](#)

Next Cancel

You must now provide all of the necessary server information in the Configure server settings window.

Incoming e-mail server type: choose **IMAP** from the dropdown menu.

Incoming mail (POP3 or IMAP) server: write the address **imap.distributel.net**

The SMTP server always **depends on the Internet Service Provider you are using** as you are sending your email. While on Distributel's internet connection the **SMTP server** is: **smtp.distributel.net**

Be sure to **Check** "outgoing server requires authentication" or **you will not be able to send any emails** from your PC.

Set up e-mail servers

Incoming e-mail server type:

Incoming mail (POP3 or IMAP) server:

Outgoing e-mail server (SMTP) name:

Outgoing server requires authentication

[Where can I find my e-mail server information?](#)

Next Cancel

E-mail username: This is where you have to fill in your **complete e-mail address**.

Password: this is the password for your email account. It was provided to you when your account was created. If you lost your password you can call Customer Support to retrieve it.

Internet Mail Logon

Type the account name and password your Internet service provider has given you.

E-mail username:

Password:

Remember password

Next Cancel

You can choose to check "Remember Password" in order to quickly receive your emails without having to provide your password on every connection attempt.

Your new IMAP email account is now configured.

Click Finish, then click Close.

