



High Speed DSL Internet Setup Guide

We are here to help, feel free to contact us with questions or to provide feedback.

For additional information, please visit the FAQ section of our website at www.distributel.ca. To provide feedback, please submit a customer review via our website or our Facebook page. For other questions, please call our Customer Experience team at **1-877-810-2877**. You can also receive Technical Support at the same number, or send an email to technical.support@distributel.ca.



WWW.DISTRIBUTEL.CA

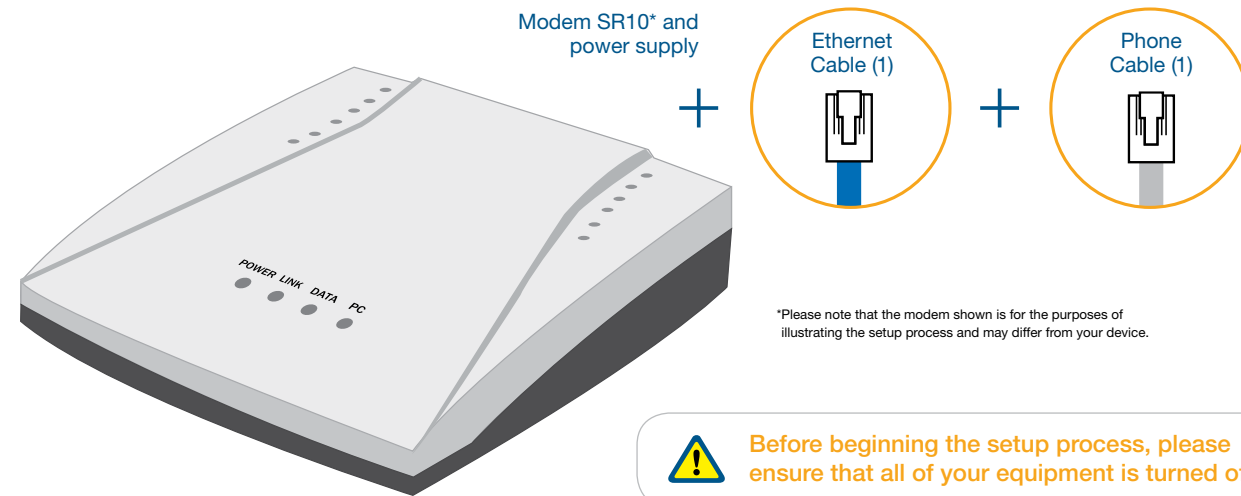
170207_DCL_SR10_en.1



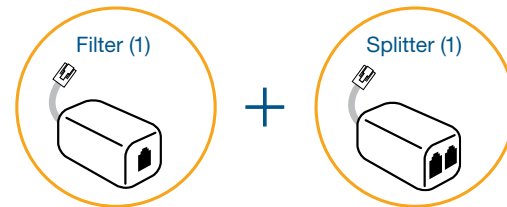
Thank You for choosing Distributel

In order to ensure the smooth setup of your Distributel High Speed DSL Internet service, please follow the easy steps laid out in this guide.

The setup kit for your High Speed DSL service should contain the following items:



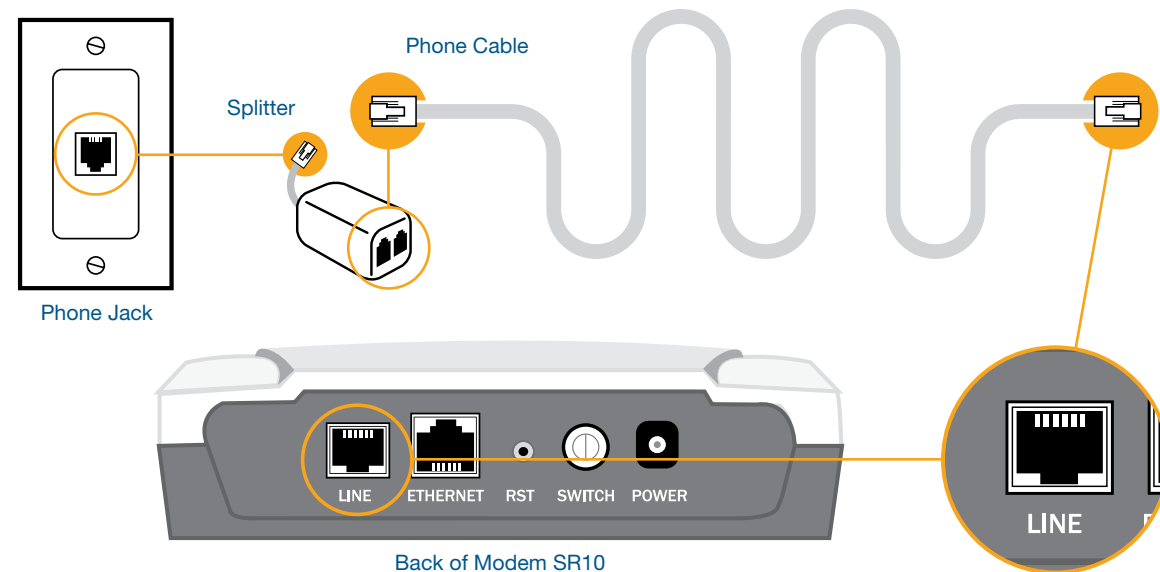
For customers with a Bell landline phone, your setup kit will also include a splitter and filter. Please follow special instructions in Step 1 and Step 4.



STEP 1

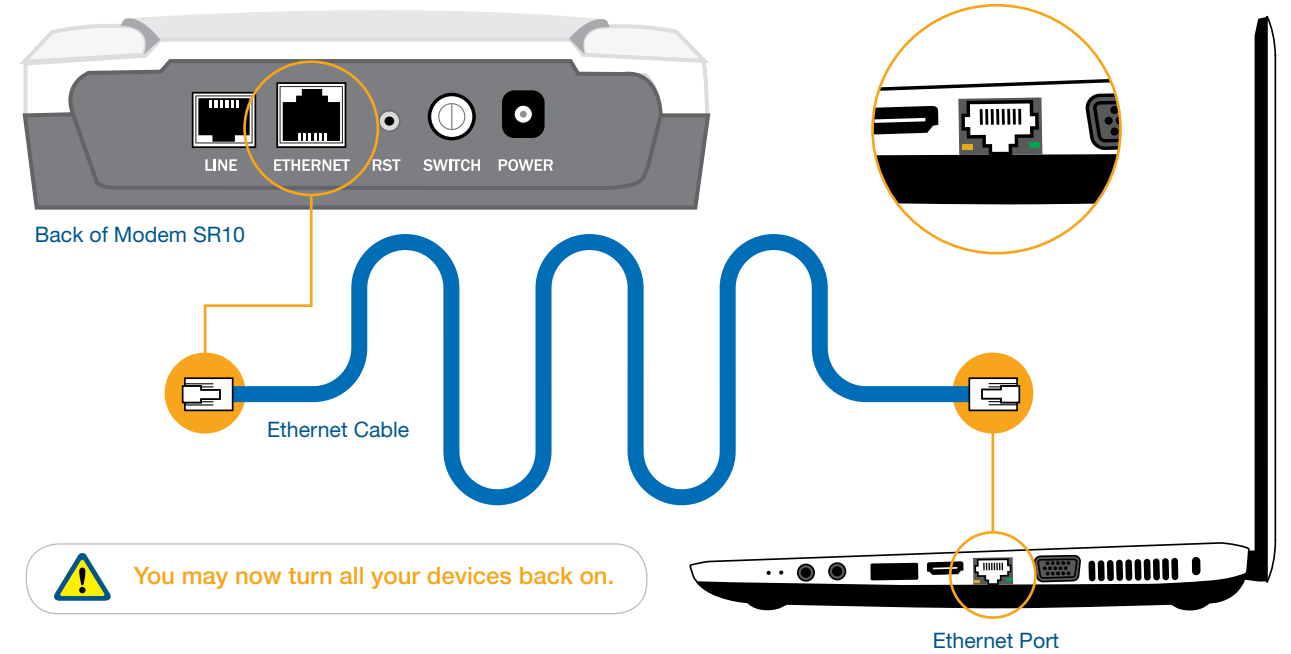
Using the phone cable provided in your installation kit, connect the grey LINE port located on the back of the modem SR10 to your phone jack.

For customers with Bell landline phone, connect the grey LINE port located on the back of the modem to the DSL port of the splitter. Then connect the splitter to your phone jack.



STEP 2

Using the Ethernet cable provided, connect the modem SR10 ETHERNET port to your laptop.

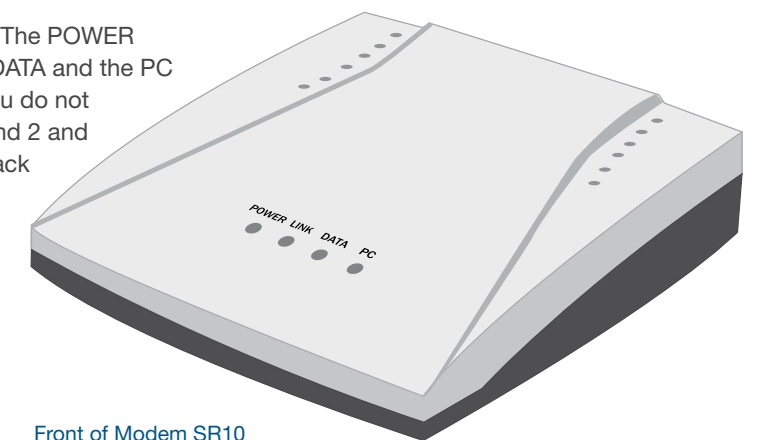


STEP 3

Please wait **2 minutes** for the modem to boot-up. The POWER and LINK lights should become solid green. The DATA and the PC lights should become solid or blinking green. If you do not see the mentioned lights, please repeat steps 1 and 2 and ensure that the SWITCH button, located on the back of the modem, is depressed.

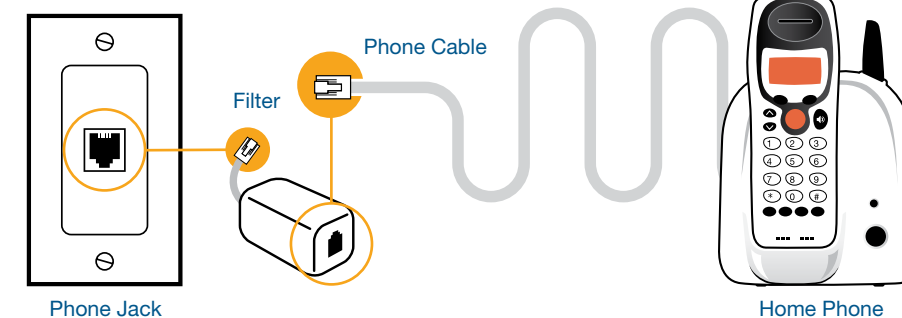
DSL MODEM SR10 LIGHTS

LIGHTS	READ
POWER	Solid Green
Link	Solid or Blinking Green
DATA	Solid or Blinking Green
PC	Solid or Blinking Green



STEP 4

For customers with Bell landline phone, the filter(s) must be connected between your phones and their corresponding phone jacks, as illustrated below.



**CONGRATULATIONS!
YOUR SETUP IS
NOW COMPLETE.**