



High Speed DSL Internet Setup Guide

We are here to help, feel free to contact us with questions or to provide feedback.

For additional information, please visit the FAQ section of our website at www.distributel.ca. To provide feedback, please submit a customer review via our website or our Facebook page. For other questions, please call our Customer Experience team at **1-877-810-2877**. You can also receive Technical Support at the same number, or send an email to technical.support@distributel.ca.



WWW.DISTRIBUTEL.CA

170207_DCL_360N_en.1

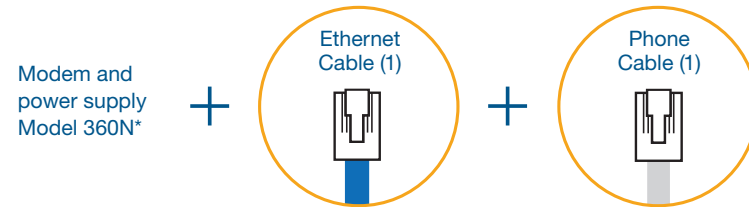


Thank You for choosing Distributel

In order to ensure the smooth setup of your Distributel High Speed DSL Internet service, please follow the easy steps laid out in this guide.



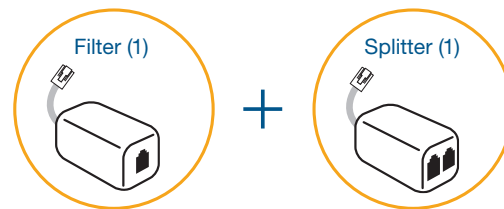
The setup kit for your High Speed DSL service should contain the following items:



*Please note that the modem shown is for the purposes of illustrating the setup process and may differ from your device.

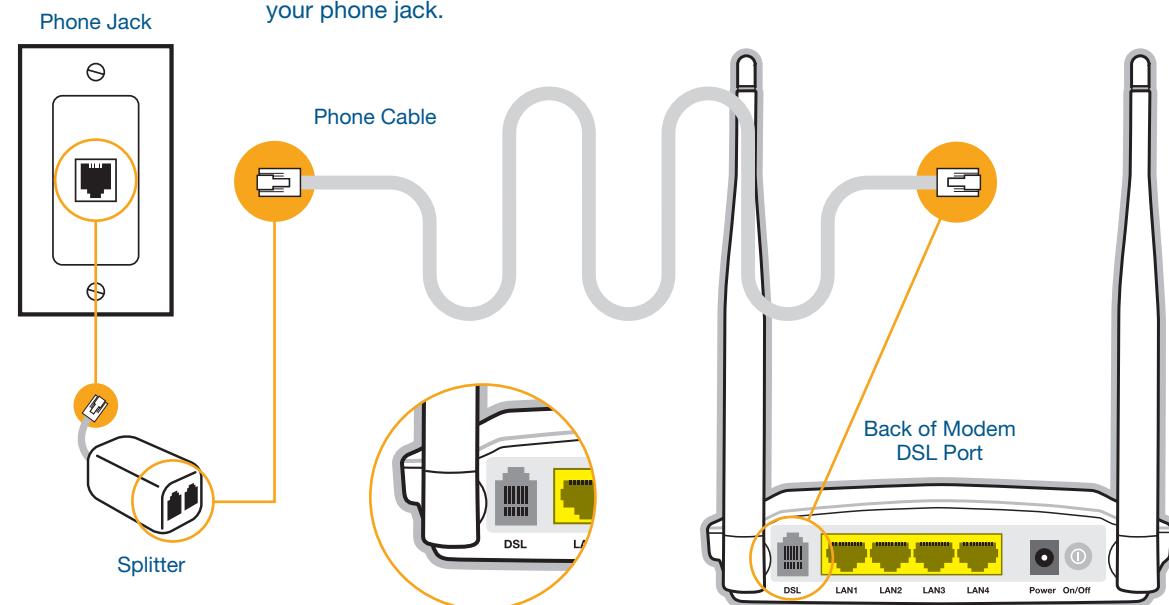
⚠ Before beginning the setup process, please ensure that all of your equipment is turned off.

For customers with a landline phone, your setup kit will also include a splitter and filter. Please follow special instructions in Step 1 and Step 4.

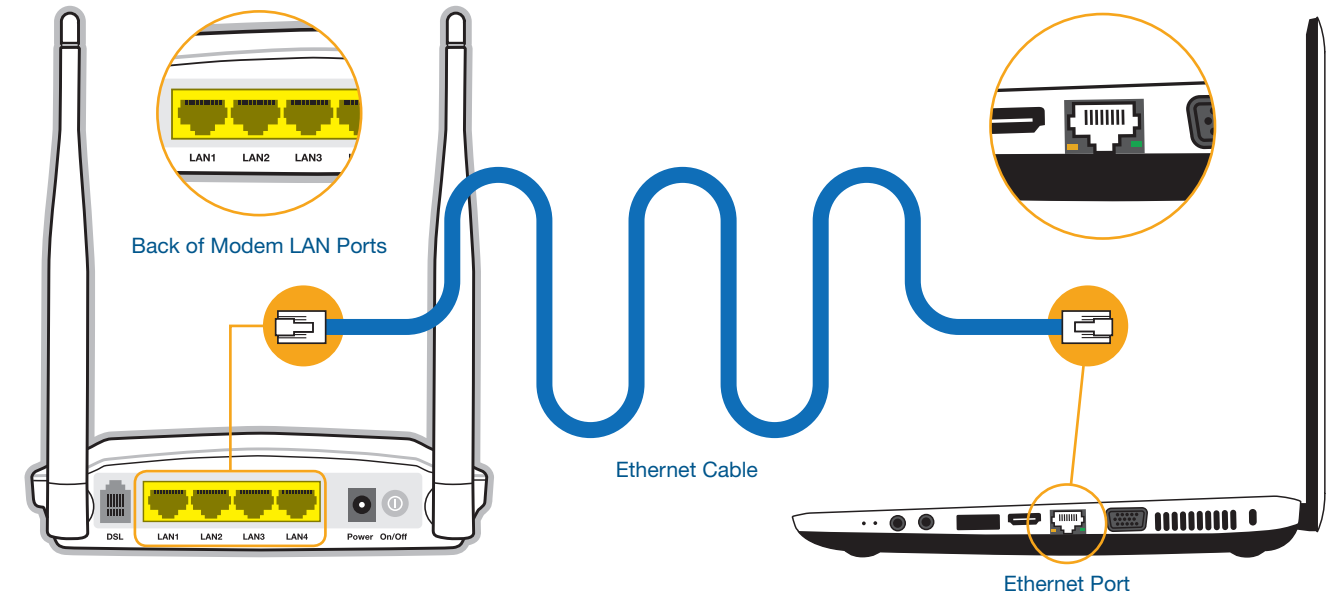


STEP 1 Using the phone cable provided in your installation kit, connect the grey DSL port located on the back of the modem 360N to your phone jack.

For customers with a landline phone, connect the grey DSL port located on the back of the modem to the DSL port of the splitter. Then connect the splitter to your phone jack.



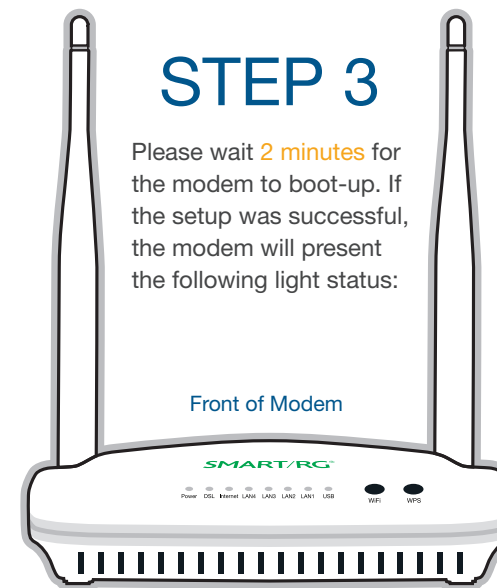
STEP 2 Using the Ethernet cable provided in the setup kit, connect your computer or laptop to an available LAN port at the back of the modem.



⚠ You may now connect the appropriate power adapters to the devices, starting by the DSL modem.

STEP 3

Please wait **2 minutes** for the modem to boot-up. If the setup was successful, the modem will present the following light status:

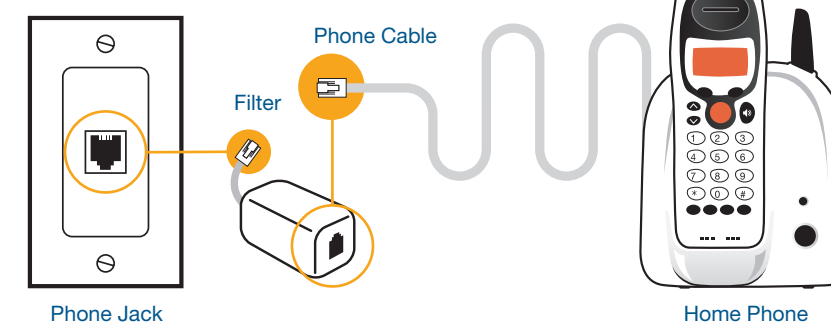


DSL MODEM LIGHTS

LIGHTS	READ
Power	Solid Green
DSL	Solid Green
Internet	Solid Green
LAN 1-4	Flickers Green (if connected to a device)
USB	Off
WiFi (Button/LED)	Flickers Green
WPS (Button/LED)	Off



STEP 4 For customers with a landline phone, the filter(s) must be connected between your phones and their corresponding phone jacks, as illustrated below.



CONGRATULATIONS!
YOUR SETUP IS NOW COMPLETE.